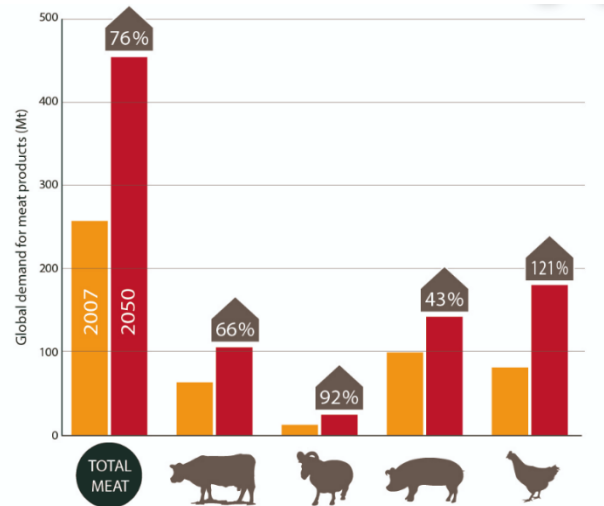


² Ataturk University - Department of Animal Science, 25240 Erzurum - Turkey,

Problem Statement

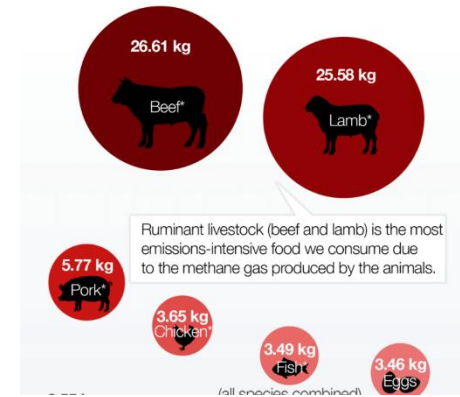
1

Meat consumption is projected to rise nearly 76 percent by 2050 (FAO, 2011).



2

Environment impact is a problem.



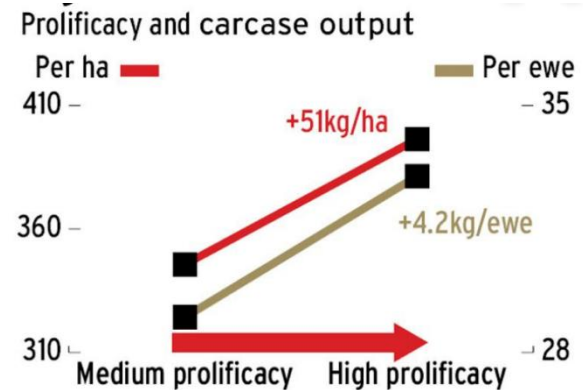
3

Animal welfare is a concern!



4

We should improve on productivity per head



<https://www.farmersjournal.ie>

Sheep Breeding & Technology

- Sheep breeding benefited little from monitoring and processing techniques contrary to other livestock



Industrialized Sheep Breeding

Industry 1.0



Traditional breeding

- Small scale
- Mixed livestock
- Pasture based
- Human decision based
- Predator and Parasites



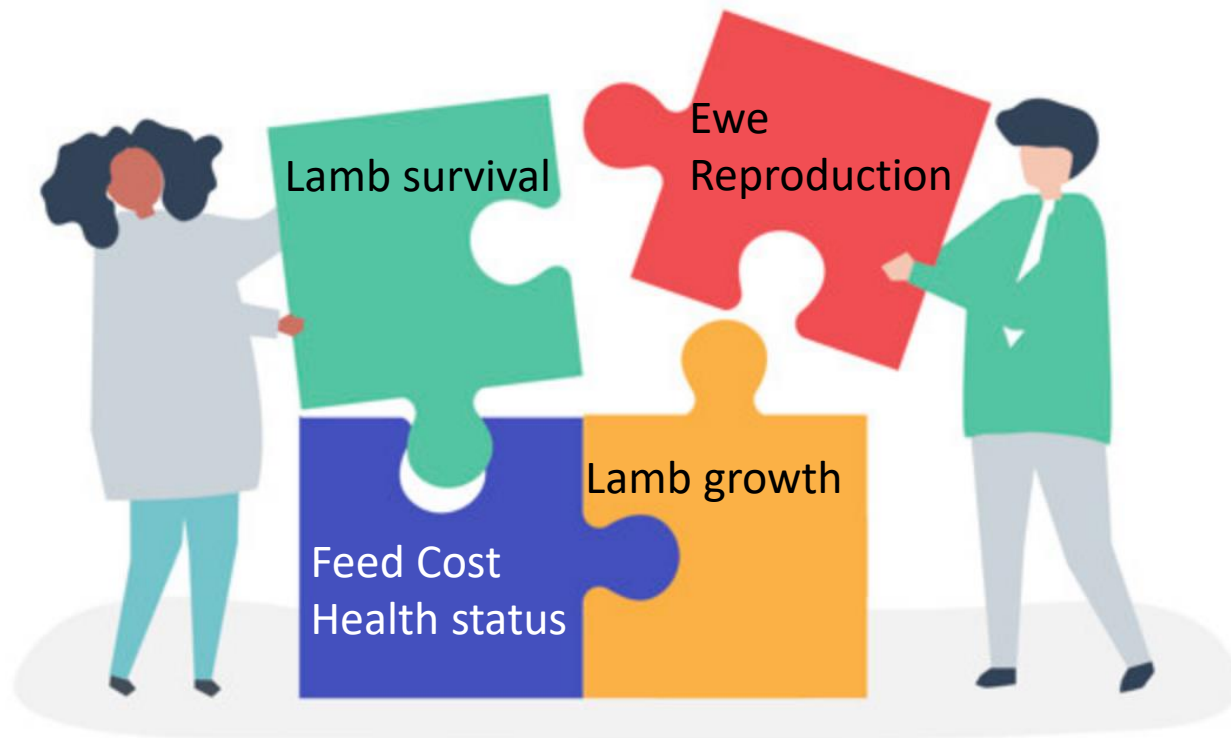
Industry 4.0



Technologic breeding

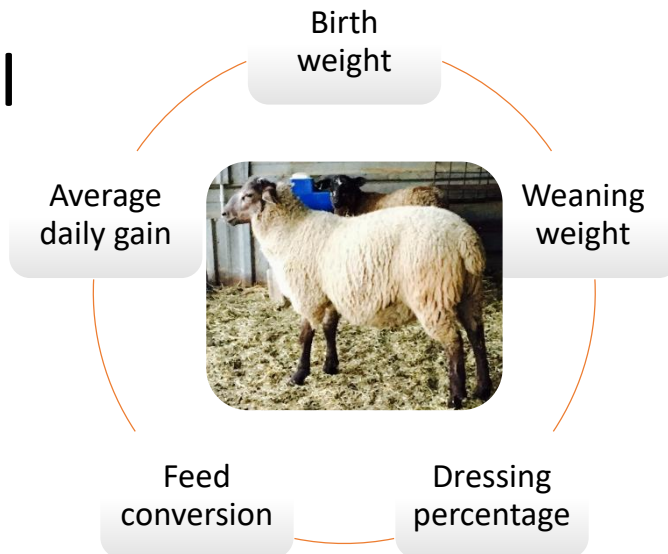
- Large scale
- Single livestock
- Intensive
- Systematic
- Data-driven control
- Profitability

Areas to excel in Sustainable-Profitable Lamb Production

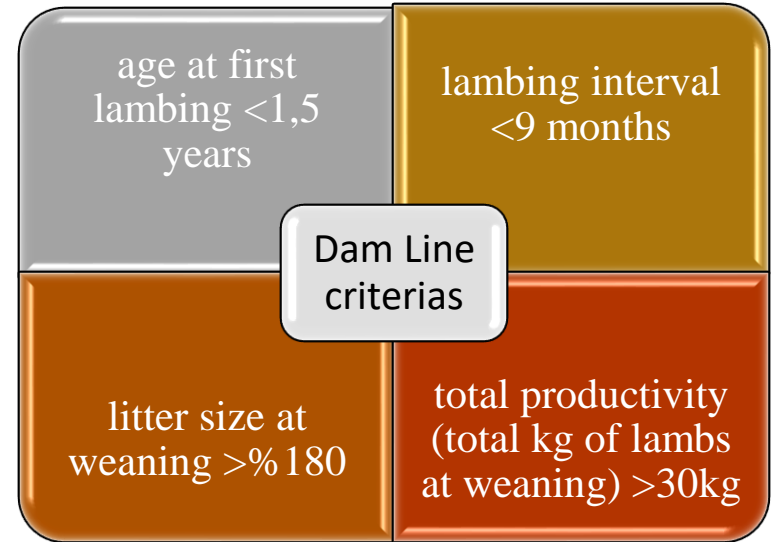


Performance Indicators

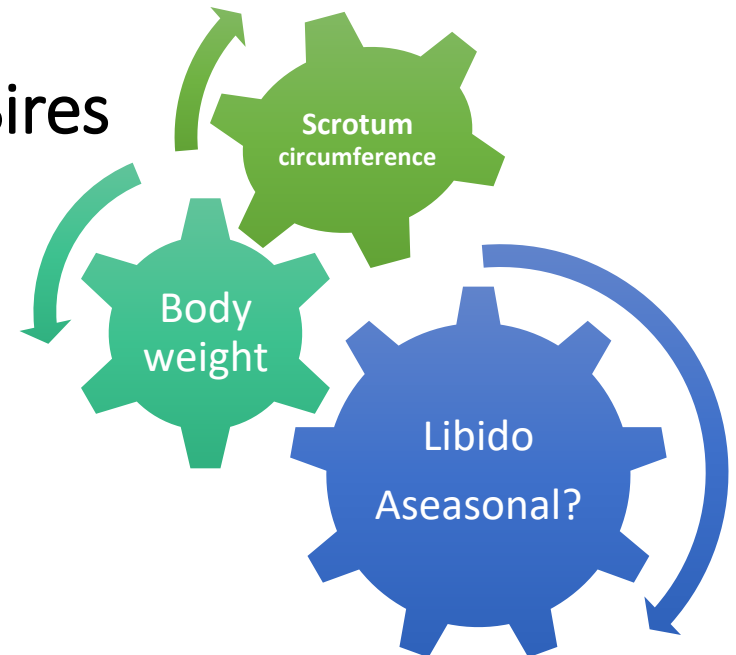
Terminal Lambs



Ewes

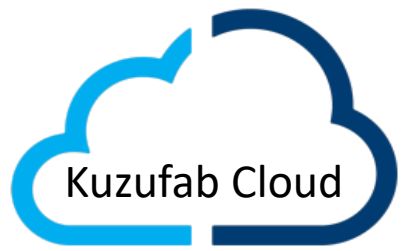


Sires



Precision Flock Management

Mobile/Cloud/IoT combined with Farm Usability



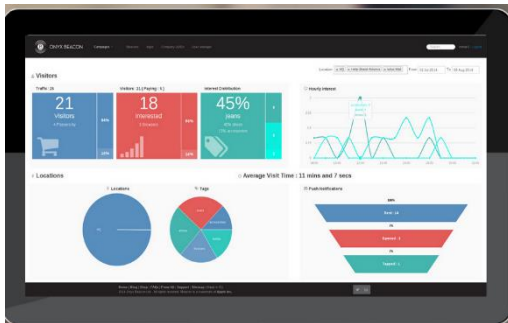
Machine Learning
Enabled Data Services



data
synchronization



Observe dashboard and
receive suggestions, alerts in
your IOS/Android app



Best ewes, Cull ewes,
Daily weight gain,
market readiness for
lambs, etc ...



Unique architecture;
Android powered RFID
reader integrated with
3-way drafting crate.
Cloud ready, Mobile
ready IoT Architecture



Automated counting, weighing, 3-way drafting crate

Sheep Handling Unit



Connected via  **Bluetooth**

Doors operate automatically



Automated counting, weighting and drafting crate

Drafting criteria is configurable through the mobile interface

Based on age, cull criteria, pregnancy, weight, etc...

1

I am pregnant



2

I weigh more than 45 kg

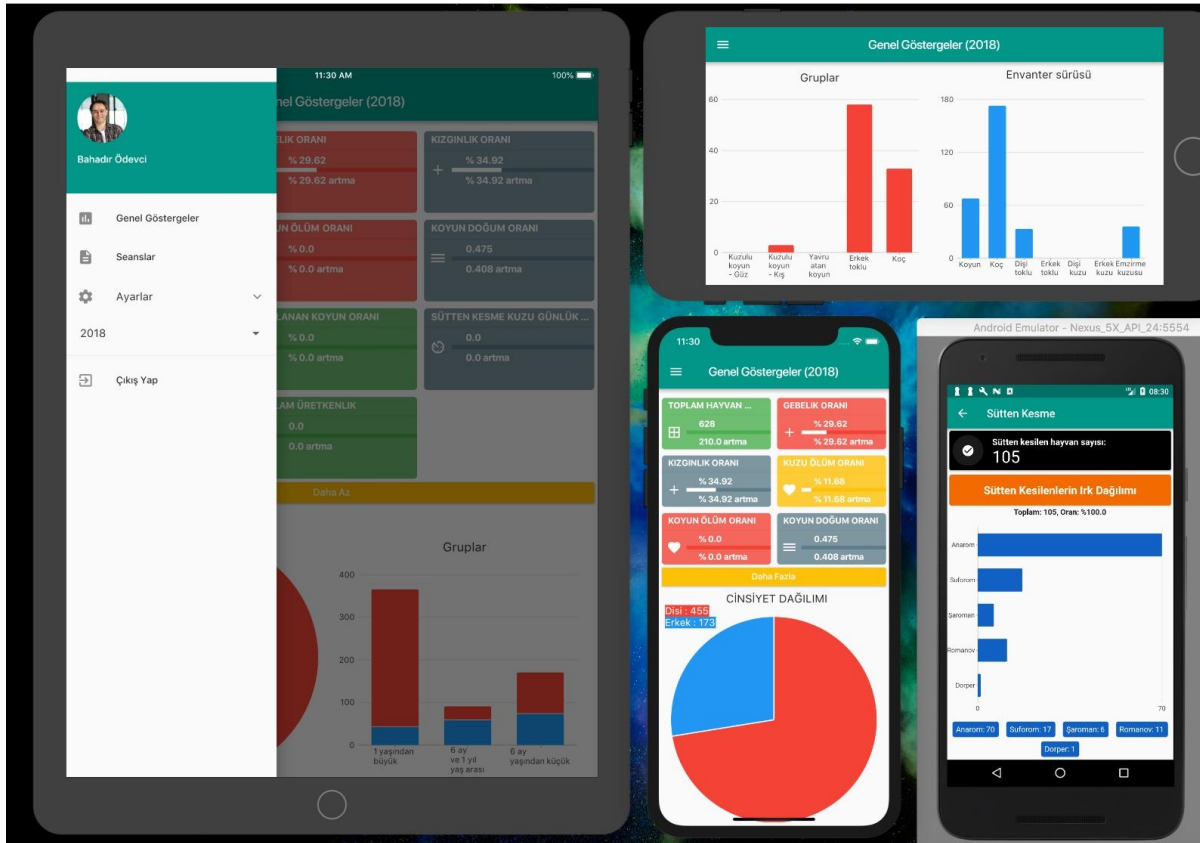


3

I am younger than 2 years



Management and Decision Support App



- Scoring ewes for production traits.
- Culling alert for underperforming ewes.
- Daily task list guides breeding strategy
- Supports Android and IOS platforms, designed for farm management
- Farm KPIs reported in real-time
- Animal handling operations are notified in real-time

KUZUFAB

KUZU
FABRİKASI

“SÜRÜ YÖNETİM SİSTEMİNE BİLGİLERİN GİRİLMESİ”

“SÜRÜ YÖNETİM SİSTEMİNE BİLGİLERİN GİRİLMESİ”

“SÜRÜ YÖNETİM SİSTEMİNE BİLGİLERİN GİRİLMESİ”



PLF achievements

- Neonatal lamb mortality decreased from %13 to %5
- Pregnancy rate in ewe lambs increased from %70 to %94
- 20% reproductive efficiency (estrus, conception, litter size, pregnancy, ...) increase in the mature ewes in accelerated 8-monthly lambing schedule.
- Total meat production productivity of ewes was recorded as average 44 kg which is 14 kg more than previous years.
- Barren ewes' ratio was significantly reduced from 10% to 3%.
- 23% decrease recorded for total feed used per ewe.

FINE-TUNE FLOCK MANAGEMENT



Mobile flock management of
intensive sheep farm

300%

*Total productivity of ewe was
increased 3X with Precision Mobile
Flock Manager by
reducing lamb mortality, increasing
reproductive performance of ewes
and saving from feed sources*



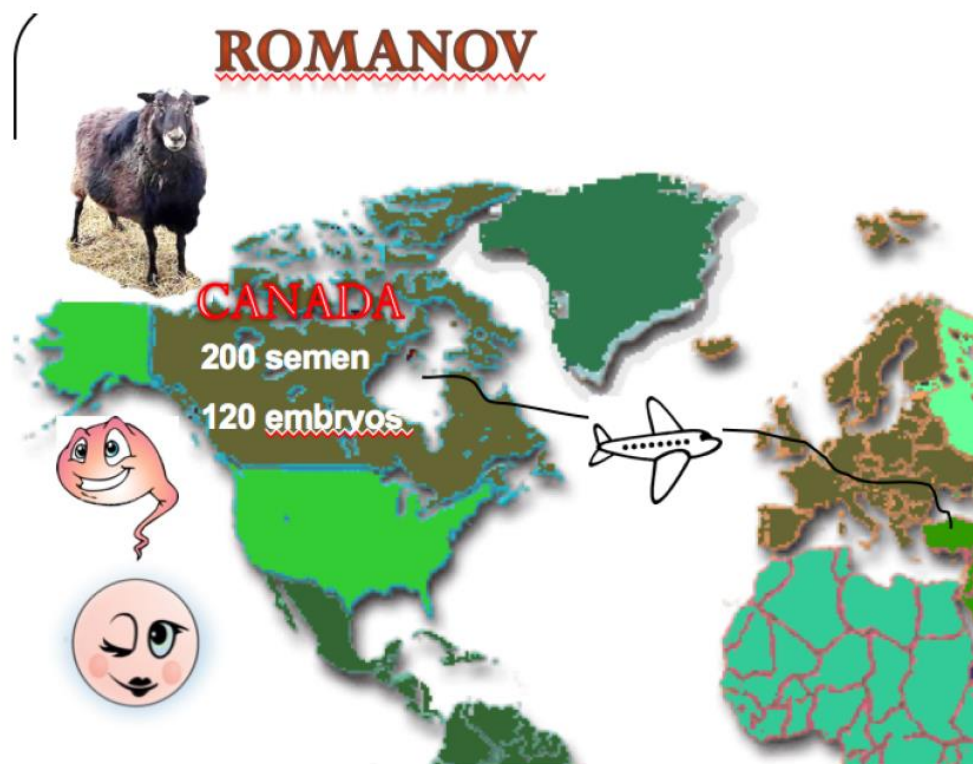
REMARKABLE PROLIFICACY



Evaluation of reproductive performance of crossbreeds of
Romanov and Turkish Native Breeds

2004

*Prolific Dam Line ANAROM
,developed using high assisted
reproductive technologies and
high genetic merit, is highly
adopted to different region,
climate and management system.*



CONTROL OVER HOW YOU EARN



Controlling reproduction in
Sheep & Goats and developing easycare breeds

**6 KG
15 MIN**

An extra
6 kg meat being produced per ewe
with estrus synchronization and
superovulation.

Ideal mothering ability
requires at least 15 minutes of
time spent for grooming.



GROWING TREND FUNCTIONAL FOOD



Functional food production from
goat milk and lamb meat

400%

*Lambs chops are 400% richer for
CLA and 1 glass of goat milk
provides recommended adult daily
CLA intake with strategic
feeding and breeding*



Dissemination through Social Media

Dec 16 - Jan 12

Last 28 days ▼

Post Reach

645.5k

▼ 96.1k

Post Engagements

132.4k

▲ 42.7k

New Page Likes

428

▲ 39

Posts ?

See More

33 posts published in the last 28 days.

MOST ENGAGING POSTS



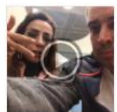
Yeni Çıkan Ziraat
Bankası İndirimli...
January 3

Reach 14.7K
Engagements 3.7K



Sakarya Kuzu
Fabrikası doğum...
December 21

Reach 15.6K
Engagements 3.4K



Video only post
January 2

Reach 23K
Engagements 2.6K



Koyunculuğa Başlayanlar İçin Önemli Noktalar - KUZU FABRİKASI / Çiftçi TV

209,547 views • Nov 27, 2018

1.3K 114 SHARE SAVE ...



ÇİFTÇİ TV
189K subscribers

<http://www.ciftcity.com/>

Bu Toprakların Kanalı Çiftçi TV

SUBSCRIBED





01

BEYKOZ KUZUFAB

02

KIRŞEHİR KUZUFAB



03

SAKARYA KUZUFAB





Kuzu Bilgileri

Küpe Numarası:	792023400714449
Resmi Küpe Numarası:	TR34000714449
Plastik Küpe Numarası:	359
İrk:	Anarom
Doğum Tarihi:	03-07-2019
Doğum Ağırlığı:	5 kg
Aşı Tarihi:	31-10-2019
Aşı Tipi:	Entratoksemi

Kullanılan Kesif Yemin İçeriği

Kuzu Fabrikası				
İdeki Ortalama Analiz	Gebe Koyun	Koyun Süt	Kuzu B.	Toklu Besi
Madde	88.26	88.42	88.61	88.19
Protein	13.56	16	17.6	14
	25	22	34	33
	15.91	14.36	7.77	11.21
	32.11	30.99	21.13	25.3
Ül	6.54	6.04	5.42	6.01
ğ	3.49	4.45	3.11	3.4
	0.88	0.75	0.65	0.68
	0.7	0.72	0.63	0.66

e (1,5 Kg/Ton) A-D-E Vitamin ve İzmineraler haricinde B
s vitaminler de içermektedir. Kil bazlı toksin bağlayıcı ve
olarak da Biosprint-S kullanılmaktadır. Nişasta kaynağı
ağırlıklı olarak mısırdan elde edilmektedir.

Tüketilen Kesif Yem Analizi

